



## Fiber/T Media Converter

เพิ่มระยะทางของ LAN ด้วยสายไฟเบอร์ ออฟติก

Model

- MC-1T-S25S-A Media Convert 10/100 Ethernet, Single Mode, 25 km, SC Connector, A-1310 nm
- MC-1T-S25S-B Media Convert 10/100 Ethernet, Single Mode, 25 km, SC Connector, B-1550 nm
- MC-1T-S25F-A Media Convert 10/100 Ethernet, Single Mode, 25 km, FC Connector, A-1310 nm
- MC-1T-S25F-B Media Convert 10/100 Ethernet, Single Mode, 25 km, FC Connector, B-1550 nm

## 10/100 Converter Switch

Switch 10/100 Mbps พร้อมช่องต่อสัญญาณจากสายไฟเบอร์ออฟติก

Model

- MC-4T-S25S-A Convert Switch 10/100 Ethernet 4 port, Single Mode, 25 km, SC Connector, A-1310 nm
- MC-4T-S25S-B Convert Switch 10/100 Ethernet 4 port, Single Mode, 25 km, SC Connector, B-1550 nm
- MC-4T-S25F-A Convert Switch 10/100 Ethernet 4 port, Single Mode, 25 km, FC Connector, A-1310 nm
- MC-4T-S25F-B Convert Switch 10/100 Ethernet 4 port, Single Mode, 25 km, FC Connector, B-1550 nm

## Gigabit Converter Switch

Gigabit Switch ด้วยความเร็วสูงสุด 1,000 Mbps

Model

- MC-4G-S25S-A 4 ports Gigabit Converter Switch 10/100/1000, Single Mode, 25 km, SC Connector, A-1310 nm
- MC-4G-S25S-B 4 ports Gigabit Converter Switch 10/100/1000, Single Mode, 25 km, SC Connector, B-1550 nm
- MC-4G-S25F-A 4 ports Gigabit Converter Switch 10/100/1000, Single Mode, 25 km, FC Connector, A-1310 nm
- MC-4G-S25F-B 4 ports Gigabit Converter Switch 10/100/1000, Single Mode, 25 km, FC Connector, B-1550 nm

MC-1T-S25S-A  
MC-1T-S25S-B



MC-1T-S25F-A  
MC-1T-S25F-B



MC-4T-S25S-A  
MC-4T-S25S-B



MC-4T-S25F-A  
MC-4T-S25F-B



MC-4G-S25S-A  
MC-4G-S25S-B



MC-4G-S25F-A  
MC-4G-S25F-B

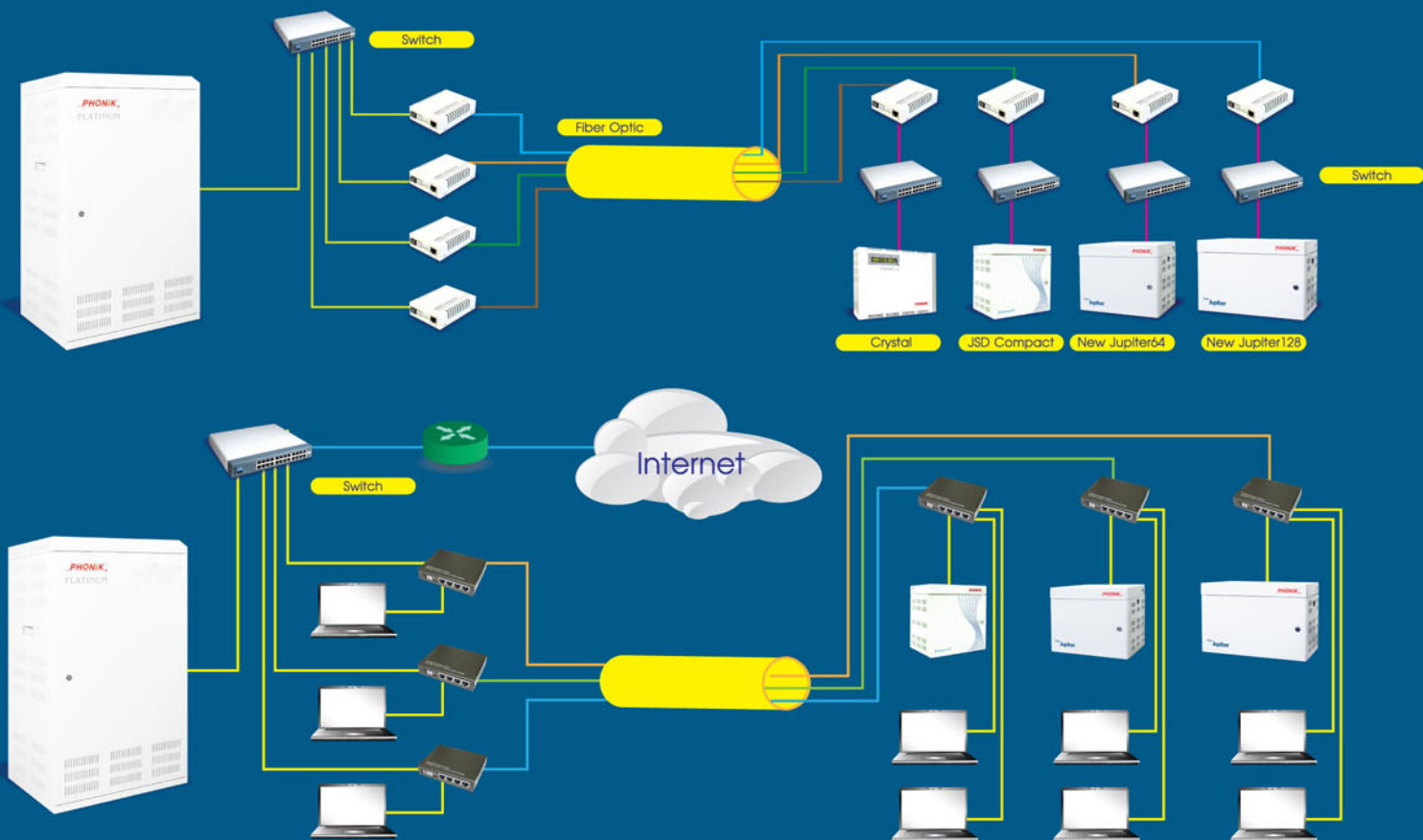
## Features

- 1-4 ports 10/100 Mbps or 10/100/1000 Ethernet on Cat5 cable
- Non-blocking wire-speed reception and transmission
- Fully compliant with IEEE802.3/802.3u auto-negotiation functions.
- MDI/MDIX auto crossover for plug-and-play.
- Supports IEEE 802.3x flow control for Full Duplex mode and backpressure for Half Duplex mode
- Supports up to 10K byte JUMBO frames
- Very long distance with 25km fiber optic cable length.
- Use only single fiber optic cable for Full-Duplex communication with WDM.

## Specifications

- Standards :IEEE802.3u 10/100Base-TX and 100Base-FX  
:10/100/1000Base-T copper and 1000Base-X.
- Data rate : 10/100Mbps full duplex or 10/100/1000 Mbps full duplex
- Connectors : RJ-45 UTP
- MDI/MDIX auto crossover for plug-and-play
- Fiber optic cable : Single mode, Single fiber
- Fiber optic connector : SC, FC (other type is optional)
- Fiber optic wave length : 1310nm/1550nm WDM
- Fiber optic maximum cable length : 25km (40km, 60km, 80km optional)
- Fiber optic standards : ITU-T G.957, G.958
- Power Requirement : 500mA +5Vdc

## การเชื่อมต่อ IP-PBX ด้วย VoIP ผ่าน Fiber Optic Cable



ตัวอย่างการนำ Media Converter เชื่อมอุปกรณ์ระบบสื่อสาร

ผู้แทนจำหน่าย

